



Premium Building Products  
That Protect

# Protecto Wrap Stucco Tape

## Air/Vapor Barrier Tape System

### 1. PRODUCT NAME

Protecto Wrap Stucco Tape

### 2. DESCRIPTION

Protecto Wrap Stucco Tape is a superior self-adhering, air and moisture barrier for vertical and horizontal EIFS/Stucco systems.

Protecto Wrap Stucco Tape is a 30 mil SBS modified rubberized asphalt membrane with a polyester top surface. This polyester surface enhances the adhesion if the base coat is applied directly to this surface. The Stucco Tape can be applied over gypsum board, wood, metal, styrene and polyethylene surfaces to form an air and vapor barrier in the EIFS/Stucco system. The Protecto Wrap Stucco Tape is self sealing when penetrated with mechanical fasteners.

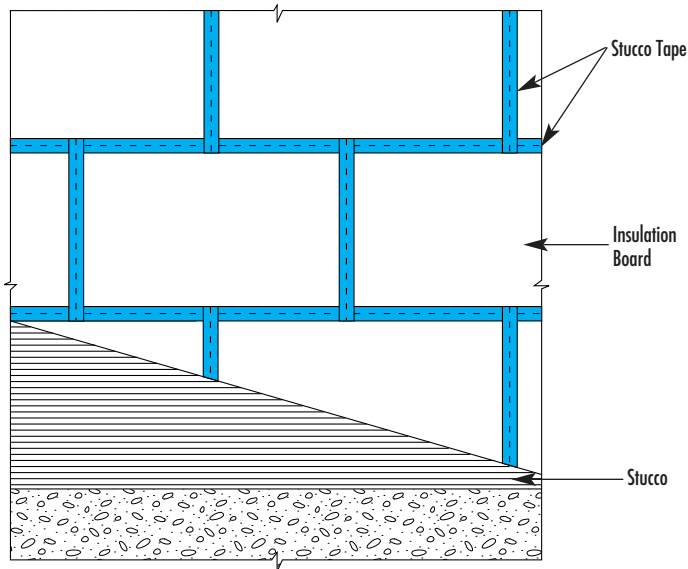
Stucco Tape should be used to seal window and door openings, joints in the insulation or gypsum board and wherever water infiltration may be a concern.

### 3. PROPERTIES

		<u>Test Method</u>
Color	White - Top Surface Black - Bottom Surface	
Thickness	30 mil	
Tensile Strength (Polyester Fabric)	1400 psi	ASTM-D-412
Elongation (Rubber Asphalt Adhesive)	over 500%	ASTM-D-412
Moisture Vapor Transmission Rate	0.1 perm max.	ASTM-E-96

### 4. APPLICATION

Surfaces should be clean, dry and free of dirt and other foreign matter. Protecto Wrap Stucco Tape should be applied at a temperature above 45°F (7°C). For application below this temperature the material must be stored in a warm area. At temperatures under 45°F (7°C) and above 32°F (0°C), use Protecto Wrap 6000 water based primer. The 6000 primer complies with all federal Volatile Organic Compound (VOC) regulations. For temperatures under 32°F, use number 100 primer. This is a solvent based primer and has been tested with the EIFS/Stucco systems. Very little surface etching was found once the solvent evaporated.



## 5. INSTALLATION

Cut a piece of Protecto Wrap Stucco Tape in a length that can be easily handled. Begin the application by removing approximately 12 inches of the release paper and center the tape over the area being sealed. Firmly press or roll the tape against the surface and continue pulling off the release paper while smoothing the tape in place. Rolling the Protecto Wrap Stucco Tape will help ensure a water tight seal and minimize trapping air beneath the tape.

Note: When applying the Stucco Tape to masonry or concrete, the surface must be primed with the number 100 primer.

## 6. PRECAUTIONS

When Protecto Wrap Stucco Tape is used as an air/vapor barrier, the dew point must be engineered for the exterior of the building.

Care should be taken not to leave the membrane exposed to direct sunlight for more than 6 weeks.

## 7. PACKAGING

Available in the following sizes:

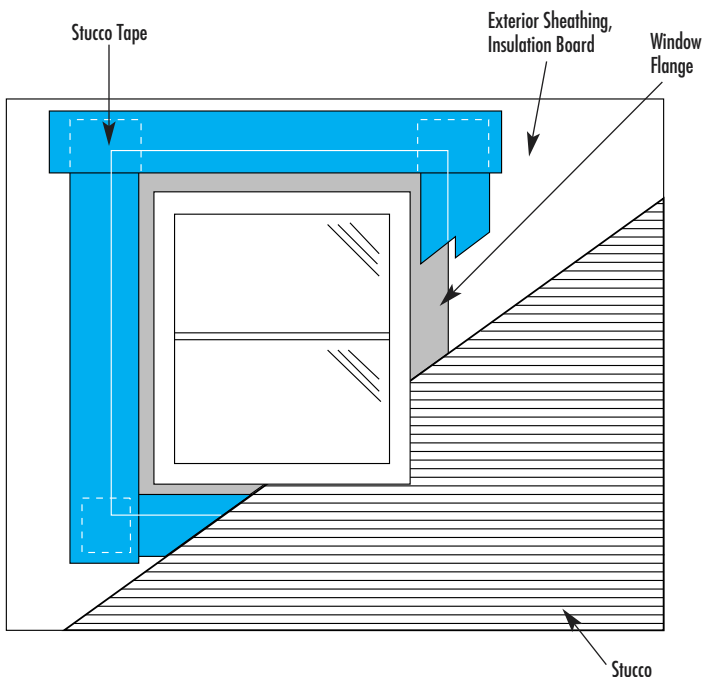
**Rolls/Case**

4" x 100' Roll 12

6" x 100' Roll 8

12" x 100' Roll 4

18 cases per pallet • 128 lbs. per case



For technical assistance please contact:



**Premium Building Products  
That Protect**

### PROTECTO WRAP COMPANY

1955 South Cherokee St. • Denver, Colorado 80223

(303) 777-3001 Fax (303) 777-9273 (800) 759-9727

[www.protectowrap.com](http://www.protectowrap.com)